

## Meet the Career Services Staff

Another year is in full swing with fall break right around the corner! A quarter of the year has passed and you've settled into the groove of another year! Soon you may find that you need job search assistance, resume writing tips, or help figuring out what to do with your major! **The Office of Career Services**, located on the 3rd floor of the Huffman Administration Building, is here to assist you whether you are a freshman or a senior! Let's meet the staff:

**Sherry Weldy**—Career Development Coordinator  
**Hermalena Powell**—Career Development Specialist  
**Linda Elek**—Career Counselor and Retention Specialist  
**Banitha Vinscon**—Career Services Secretary

Need assistance? Then don't hesitate to contact our office at (574) 807-7096 to schedule an appointment. Hours are Monday—Friday, 8am—5pm.

## Life Calling Student Enrichment Center

Bethel College is proud to announce that this fall the **Life Calling Student Enrichment Center** opened. According to Dr. Dennis Engbrecht, "*The purpose of the Life Calling Student Enrichment Center is to serve students by facilitating academic achievement, individual growth, leadership development, and a personal journey toward a life calling.*"

Housed within this new structure are offices many of our students may already be familiar with:

- FYE (*otherwise known as Freshmen Year Experience*)
- Office of Academic Support
- Office of Career Services
- Service Learning Office
- The Writing Center
- Wellness Programming

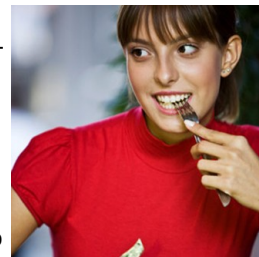
The Life Calling Student Enrichment Center is located on the third floor of the Miller-Moore Academic Center in A346.

You'll be sure to see some familiar faces should you decide to stop over for a visit.



## SENIORS!! Dining etiquette can be critical to your job success

When the opportunity to land your big job arrives, you need to be prepared to know what's expected of you during a formal business dinner. Many of today's business meetings, sales meetings, and job interviews take place over a meal. Knowing how to act, what to say and even which fork to spear your salad with can help you land that job and excel in business. These dinners may open the door for future growth within a company or provide you with the opportunity to talk to your boss and co-workers in a different setting.



The Offices of Career Services and Alumni Services invite YOU to **come** and learn the basic essentials on good table manners and networking skills that will help you through any formal or semi-formal meal. Join us for the **Etiquette Dinner for Seniors**, at Riverside Terrace on **Monday, November 8<sup>th</sup> from 6:00-8:30pm.**

Reservations are a must and **interview appropriate attire** is expected. Reserve your spot at [www.BethelCollege.edu/etiquette](http://www.BethelCollege.edu/etiquette) by November 1<sup>st</sup>. **Cost is only \$5** and should be paid in advance at the Alumni Office, A210, in the Huffman Administration Building.

## Career Countdown for Seniors

### October: Perfect your resume

- Check out the Information Packet stocked with tips and samples under Job Assistance on our website.
- Never done a resume? Just want to start one from scratch? Then click on the big blue box: OPTIMAL RESUME on the Career Service home page of our website.
- For more information, visit our website at <http://www.bethelcollege.edu/services/career/>

### Office of Career Services

Huffman Administration Building ▲ Room A316 ▲ (574) 807-7096  
[careerservices@bethelcollege.edu](mailto:careerservices@bethelcollege.edu) ▲ [www.bethelcollege.edu](http://www.bethelcollege.edu) >Campus Services >Career & Internships

## Job Outlook 2011: Hiring Outlook Positive in All Regions

NACE's *Job Outlook 2011 Fall Preview survey* shows that the hiring outlook for the college Class of 2011 is positive in all regions of the country.

Overall, employers expect to hire 13.5 percent more new grads from the Class of 2011 than they hired from the Class of 2010. By region, employers in the West project the biggest increase compared with last year, followed by employers in the Midwest.

(See Figure 1.)

Figure 1: Total change in college hiring (by region)

Region	Number of 2010 Actual Hires	Number of 2011 Projected Hires	Percent Change	Number of Respondents
Northeast	5,623	6,360	13.1%	n=46
Southeast	7,984	8,644	8.3%	n=59
Midwest	4,292	5,161	20.2%	n=52
West	1,550	1,915	23.5%	n=26

The survey also found that employers expect to do the majority of their hiring in the fall, continuing a trend toward locking in candidates early.

The *Job Outlook 2011 Fall Preview* survey was conducted among NACE employer members July 26-August 20, 2010; 197, or 23.4 percent, responded. By region, 25.9 percent of the respondents represent organizations in the Northeast, 27.9 percent are from the Southeast, 32.5 percent are from the Midwest, and 13.7 percent are from the West.

NACE will continue to monitor the job market for the Class of 2011 through a monthly poll that begins this month; results will be published in Spotlight and on NACEWeb. In addition, NACE is currently surveying employers about their recruiting practices and preferences, anticipated salaries and benefits, and more and will report those findings in November through an expanded Job Outlook 2011 report.



This article used by permission from the National Association of Colleges and Employers

## Class of 2010 Shied Away From Job Market

Like the classes that preceded them over the past few years, the Class of 2010 were most likely to conduct their job searches by viewing company web sites, checking job postings on company and career center web sites, networking, and attending career fairs.

But results from NACE's *2010 Student Survey* suggest that the Class of 2010 was less engaged in the job search than their predecessors, with a smaller percentage of students using various activities to help them secure a job. In fact, it appears that one way many 2010 grads responded to the depressed job market was to avoid it.

Approximately 46 percent of seniors taking part in the survey who reported they were looking for a full-time job said they had actually applied for a position at the time of the survey; while that's a significant jump from the 42 percent who did so in 2009, it's below the percentages for the Class of 2007(50 percent) and Class of 2008 (48 percent).

## Upcoming Career Fair Opportunities

Bethel students are invited and encouraged to attend the following upcoming Career Fair Opportunities

### Purdue University North Central

Fall Opportunity Fair  
**Tuesday, October 12, 2010**  
 LSF Cafeteria  
 3:00 p.m.—7:00 p.m.



For additional information or to register to attend, visit [www.pnc.edu/opportunity\\_fair/](http://www.pnc.edu/opportunity_fair/)

### Indiana University South Bend Elkhart Center

Fall Job Fair  
**Friday, October 15, 2010**  
 10:00 a.m.—2:00 p.m.



For more information or to register online, visit [www.iusb.edu/~sbcareer/events](http://www.iusb.edu/~sbcareer/events)

Dress professionally and take copies of your resume to hand out. Don't forget to have your Bethel ID with you!

### Office of Career Services

Huffman Administration Building ▲ Room A316 ▲ (574) 807-7096  
[careerservices@bethelcollege.edu](mailto:careerservices@bethelcollege.edu) ▲ [www.bethelcollege.edu](http://www.bethelcollege.edu) >Campus Services >Career & Internships